



Application Procedure Specification Dhatec Bevel Protector and PE Plug

Dhatec Document No.: DHA415-APS-BPPL

Rev.	Date	Status	Prepared by	Reviewed by	Approved by
00	06.01.2015	For Construction	N. Kuijper	I. v. Assema	I. v. Assema
01	18.08.2017	For Construction	D. Eens	F. Verhaeren	I. v. Assema
02	29.01.2018	For Construction	M. Voets	M. Bayens	M. Bayens

©Dhatec BV. The following document shall be considered as copyright and the design right reserved. Copying and/or disclosure of the information contained within the following document to any third-party, other than specifically for the purpose of the project is forbidden without prior written permission of the proprietor.



Elskensakker 8, NL-5571 SK
Bergeijk, The Netherlands

Tel +31 497 542 527
Fax +31 497 555 399
Email info@dhattec.nl
Web www.dhattec.nl

Change Record

Rev.	Description of Revision
00	First Issue
01	General update + addition clamping tool
02	Font style

General Information

Equipment	Bevel Protector with PE Plug
Supplier Name	Dhatec B.V.
Telephone No.	+31 497 542 527
Fax No.	+31 497 555 399
Contact email address	info@dhatec.nl

Disclaimer of liability: Every effort has been made to ensure that the information in this document is accurate and correct to the best of our knowledge, correct at the date of publication. However, Dhatec B.V. cannot be held responsible for consequences that follow from the claims that were made in this document.

Do not carry out any repairs or modifications on the equipment without consulting Dhatec B.V., doing so will invalidate the guarantee. The guarantee is also invalidated if accidents and damage of any form are caused as a result of improper use and/or not obeying the warnings in general as explained in this user guide. Dhatec B.V. accepts no responsibility for any personal accidents as a consequence of not following the safety instructions and warnings. This is also the case for consequential loss in any form.

Safety Requirements

These are general guidelines, all personnel involved should adhere to the safety requirements of the particular location at which they are performing their operations.

Dhatec recommends wearing of suitable PPE while handling their products. This includes gloves, safety shoes, safety glasses, safety helmet, hearing protection and suitable work clothing.

The working areas should be kept tidy at all times in order to minimize the risk of trips and slips.

All personnel involved should use suitable manual handling techniques and follow industry recommended guidelines for lifting and moving, such as those described in “Ergonomic Guidelines for Manual Material Handling” published by the National Institute for Occupational Safety and Health (Publication 2007-131), or those otherwise prescribed by the client.

Required Equipment

There are 2 toolsets with which the Bevel Protector can be applied/removed. First of all, we have the hammer with pick. For applying only the hammer is necessary, for removal the pick has to be used in combination with the hammer.

The 2nd toolset consist out of the Clamping Tool with its breaks. Each beak has its own range. Please confirm you have the right beak for your pipe closure. Please read the [APS for the Clamping Tool](#) before usage. If there are any problems with one of the toolsets, please contact Dhatec.



Figure 1. Dhatec Bevel Protector Toolsets: Hammer with pick (L), Clamping Tool (R)

General instructions for application of Dhatec's Bevel Protector and PE Plug

Fitting the Bevel Protectors and plugs on the pipes can be done by one person. The Bevel Protectors and plugs can be applied on stacked pipes or directly after production/coating of pipes. Dhatec's Bevel Protector Toolset includes the tools that are needed to install and remove the Bevel Protector and the plug on the pipe end. Figure 2 below schematically shows how the Bevel Protector and the plug are to be installed using a hammer.

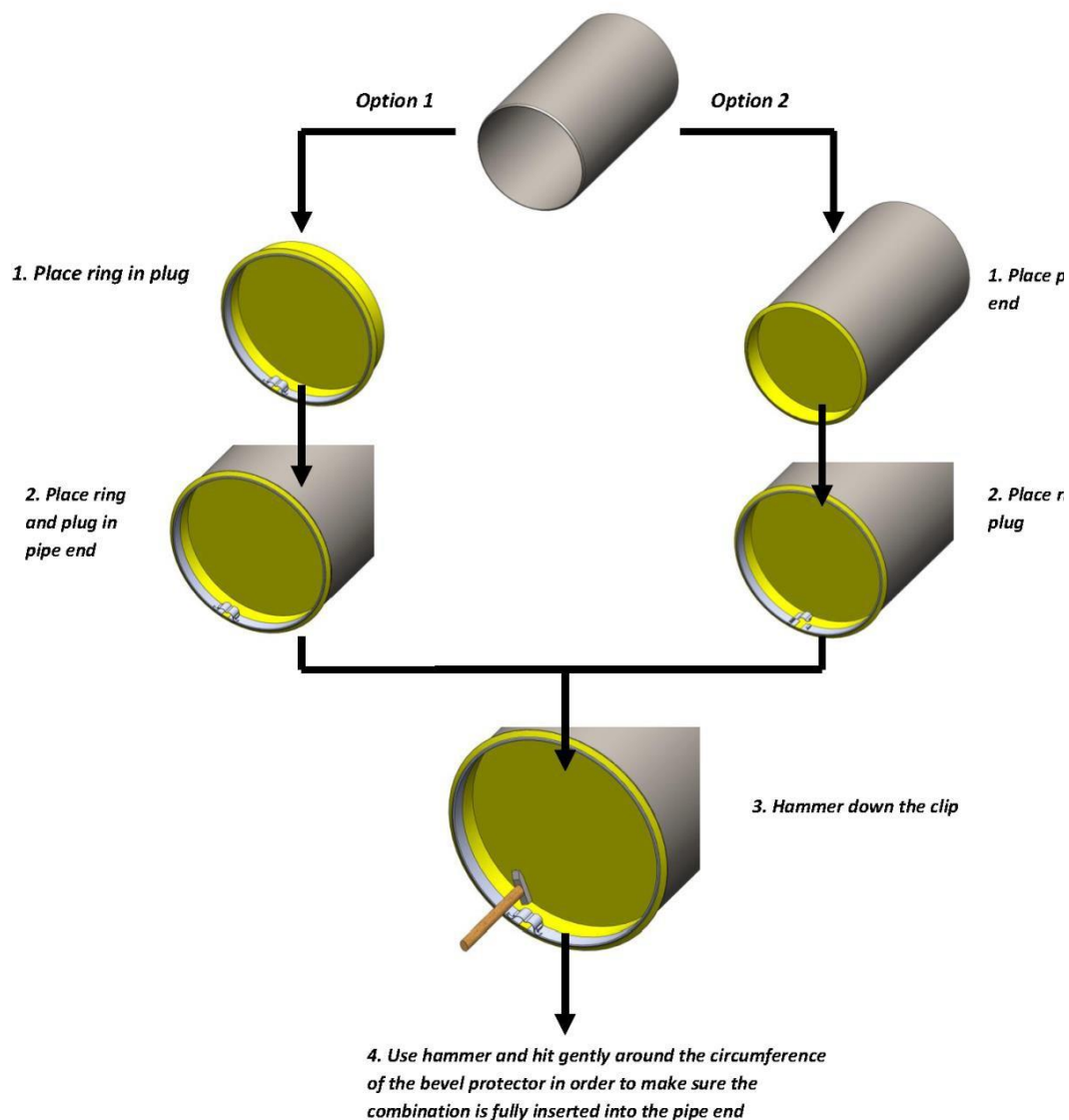


Figure 2. Installation of Bevel Protector and PE Plug

Dhatec Third Hand Tool

For safe application for Bevel Protectors and plugs for 30" or larger pipes Dhatec recommends the use of a Third Hand Tool. This tool offers you a helping hand when applying the Bevel Protector and plug. The tool keeps the solution in position, leaving both hands free for fixating the Bevel Protector in the pipe-end. Dhatec's Third Hand Tool is to be adjusted for the applicable wall thickness.

Application and use of the Third Hand Tool

The application procedure when using a Third Hand Tool is Option 1 in Figure 2. The Third Hand Tool is used for help in step 2 – Place the ring and plug in the pipe-end. The Bevel Protector and plug are fastened on the pipe on the top with the help of the Third Hand Tool. Once fastened, the solution can be secured on the pipe-end by hammering down the Clamping Clip. Once the Clamping Clip is hammered down, the Third Hand Tool can be removed. Then gently hit around the circumference of the Bevel Protector on order to make sure the combination is fully inserted into the pipe-end. Finish the application of the Bevel Protector and the plug by hitting on the Clamping Clip again, to make sure that the optimal clamping force is achieved. Figure 3 shows a picture of the Third Hand Tool in use.



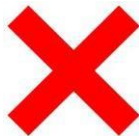
Figure 3. Third Hand Tool in use

Guidelines to check if Pipe Closure is applied properly

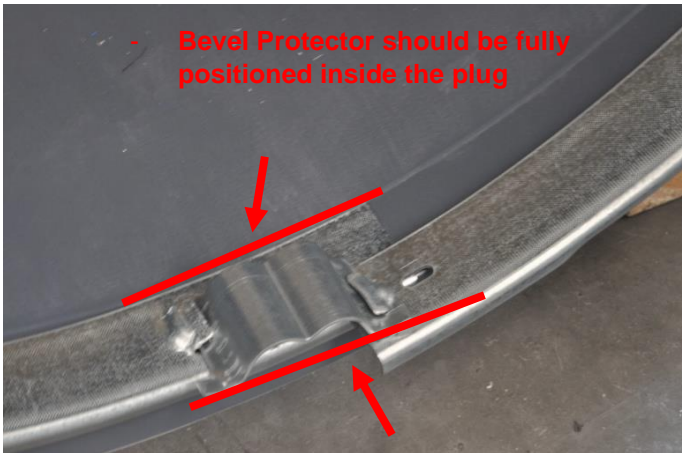
The bevel Protector and the plug should be positioned firmly against the end of the pipe. There should be no space between the pipe and the plug:



The Clamping Clip should be hammered down equally:



The Bevel Protector should be fully positioned inside the plug:



General instructions for removal of Dhatec's Bevel Protector and PE Plug

Removing the Bevel Protectors and plugs from the pipes can be done by one person. Dhatec's Bevel Protector Toolset includes the tools that are needed to remove the Bevel Protector and the plug from the pipe end. Figure 4 below schematically shows how the Bevel Protector and plug can be removed.

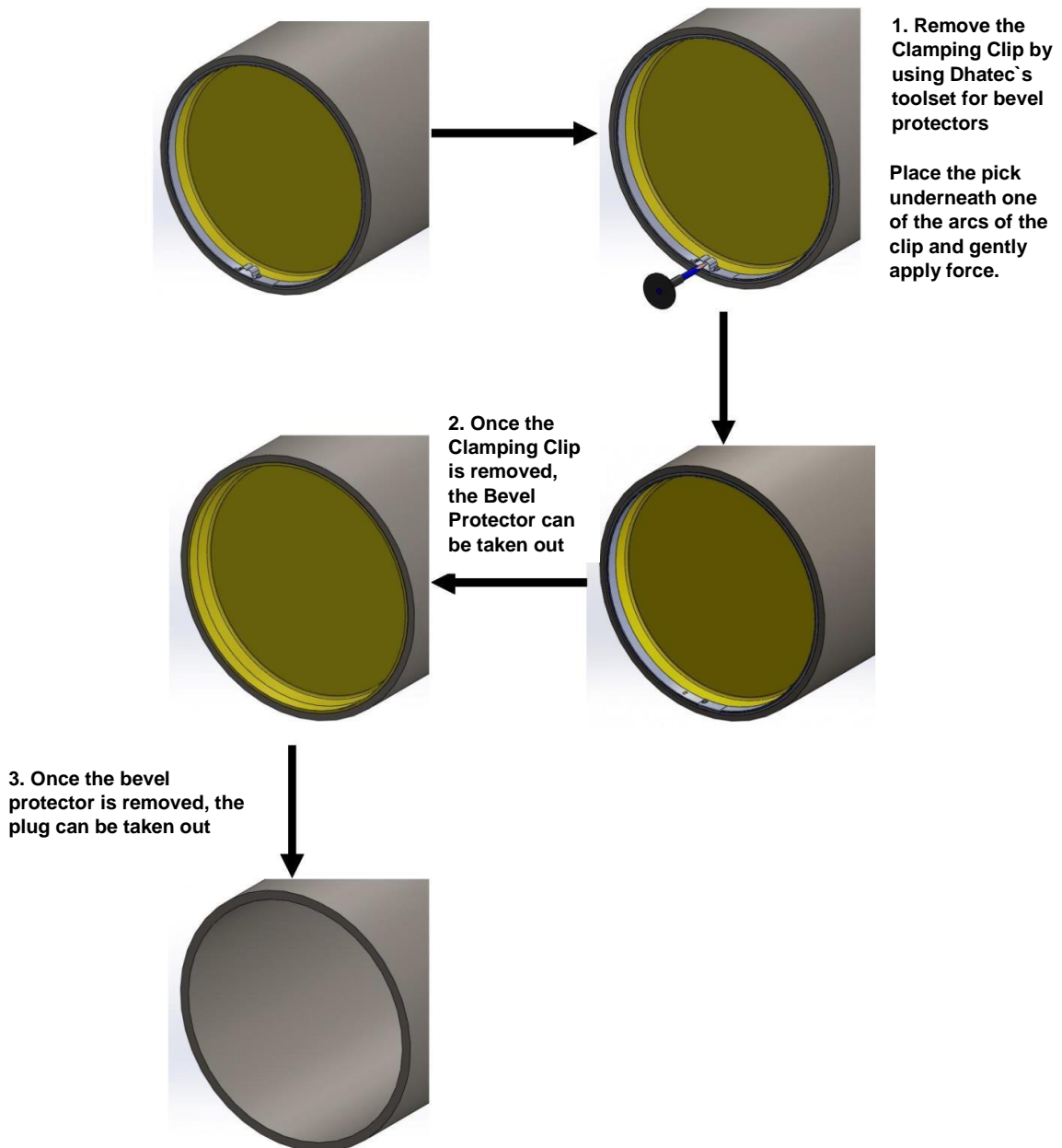


Figure 4. Removal of Bevel Protector and PE Plug